

Monthly Operations Report for June 2025 at KLCU

Operations

	Jun 2025	Jun 2024	Year over Year Change
TRANSITION	28	0	-
TOUCH & GO	106	0	-
TAKEOFF	265	0	-
LANDING	261	0	-
GO AROUND	19	0	-
Totals	776	0	-

NOTE: FLYOVER and TRANSITION are excluded from the total operations count. Operations classified as TOUCH & GO and GO AROUND are counted as two distinct operations, a landing and a takeoff respectively.

Aircraft Type

	Jun 2025	Jun 2024	Year over Year Change
Fixed wing single engine	757	0	-
Fixed wing multi engine	18	0	-
Unknown	1	0	-

Engine Type

Turbo-prop	4	0	-
Reciprocating	744	0	-
4 Cycle	27	0	-
Unknown	1	0	-

Number of Engines

1	757	0	-
2	18	0	-
Unknown	1	0	-

Average Daily Operations

Monday	30	0	-
Tuesday	28	0	-
Wednesday	22	0	-
Thursday	28	0	-
Friday	48	0	-
Saturday	37	0	-
Sunday	21	0	-
Average per weekday	31	0	-
Average per weekend	29	0	-

Local vs. Transient

Monthly Operations Report for June 2025 at KLCU

Operations			
	Jun 2025	Jun 2024	Year over Year Change
Local	0	0	0.0%
Transient	776	0	0.0%
Nights Stayed	57	0	-
Seats on Overnight Aircraft	234	0	-
Overnight Visitors @ 50%	117	0	0.0%
Runways			
RWY 09 GO AROUNDs	12	0	-
RWY 09 LANDINGS	69	0	-
RWY 09 TAKEOFFs	65	0	-
RWY 09 TOUCH & GOs	42	0	-
RWY 09 Total	188	0	-
RWY 27 GO AROUNDs	26	0	-
RWY 27 LANDINGS	192	0	-
RWY 27 TAKEOFFs	200	0	-
RWY 27 TOUCH & GOs	170	0	-
RWY 27 Total	588	0	-

Monthly Operations Report for June 2025 at KLCU

	Jan 2024	Jan 2023	Year over Year Change
Weight Class			
CLASS 1	775	0	-
Unknown	1	0	-
Jet Traffic			
Operations	0	0	-
Largest aircraft			
Average seat count per jet	0	0	-

Most Active Aircraft

Registration	Manufacturer	Model	Operations	Percentage of Total
N323FS	CESSNA	172P	346	62.1%
N8478U	CESSNA	172F	255	45.8%
N7497T	CESSNA	172A	40	7.2%
N12600	CESSNA	172M	16	2.9%
N799TE	CESSNA	310P	14	2.5%

Most Active Aircraft				
Registration	Manufacturer	Model	Operations	Percentage of Total
N3771R	CESSNA	172H	10	1.8%
N93FM	CESSNA	182Q	6	1.1%
N2812Q	CESSNA	172L	4	0.7%
N3514U	CESSNA	172S	4	0.7%
N377DS	DIAMOND AIRCRAFT IND INC	DA 40	4	0.7%

Most Active Owners		
Name	Operations	City
FREDERICKS HALL AVIATION LLC	346	MINERAL
REGISTRATION PENDING	255	TROY
LEFFLER GREG L	40	ZION CROSSROADS
KELLEY AIRCRAFT LLC	16	WEYERS CAVE
EASTER JOHN E II	14	BREMO BLUFF
CHRISTIANSEN AVIATION LLC	10	WILMINGTON
MCCAY BRIAN D	10	EARLYSVILLE
AMS AVIATION LLC	6	SOUTH BEND
SPEED JACK F JR	4	NORTH CHESTERFIELD
SEWARD BERNARD L JR	4	CHARLOTTESVILLE

Owner Locations		
City	Operations	Percentage of total
MINERAL	290	52.1%
TROY	211	37.9%
ZION CROSSROADS	32	5.7%
BREMO BLUFF	14	2.5%
WILMINGTON	10	1.8%

Aircraft Type

■ Unknown
■ Fixed wing multi engine
■ Fixed wing single engine

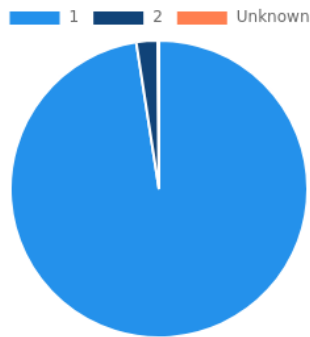


Engine Type

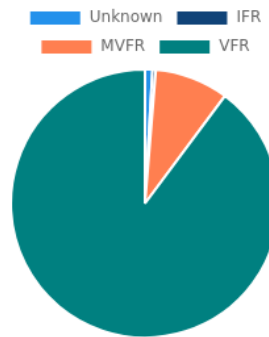
■ Unknown
■ 4 Cycle
■ Reciprocating
■ Turbo-prop



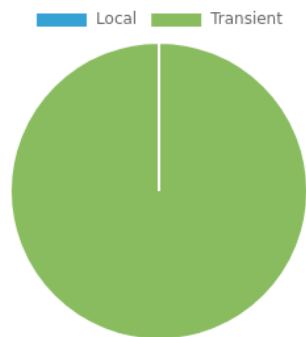
Number of Engines



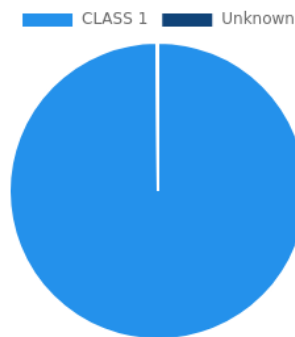
Weather



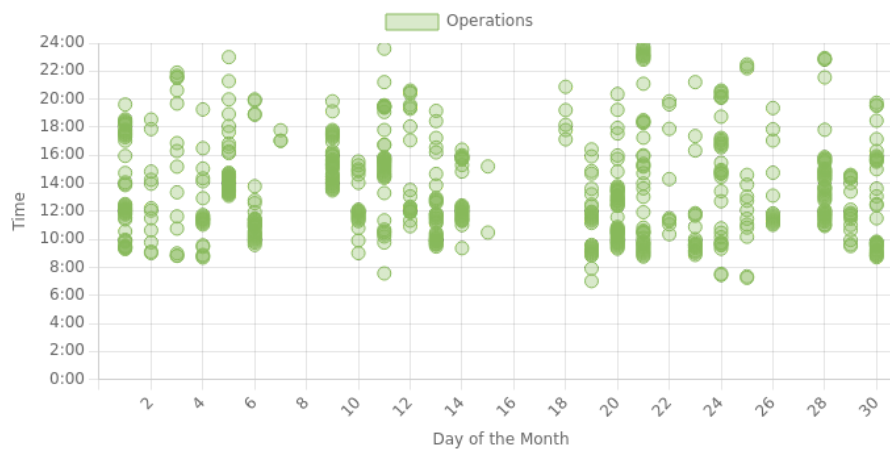
Local/Transient



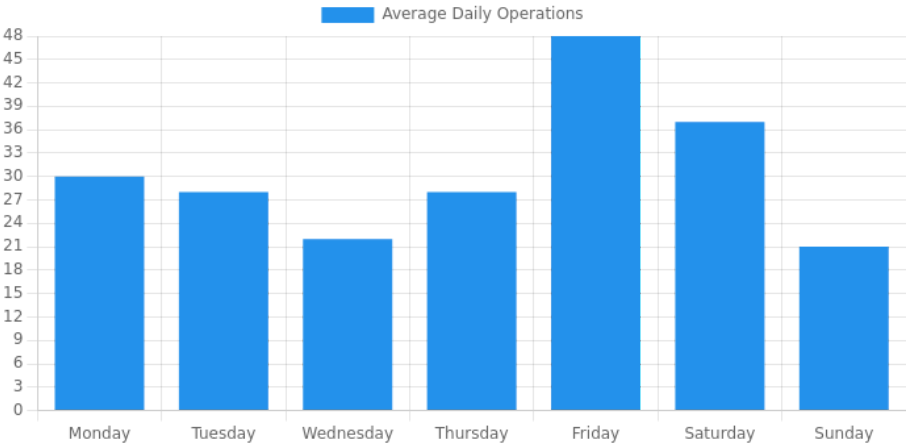
Weight Class



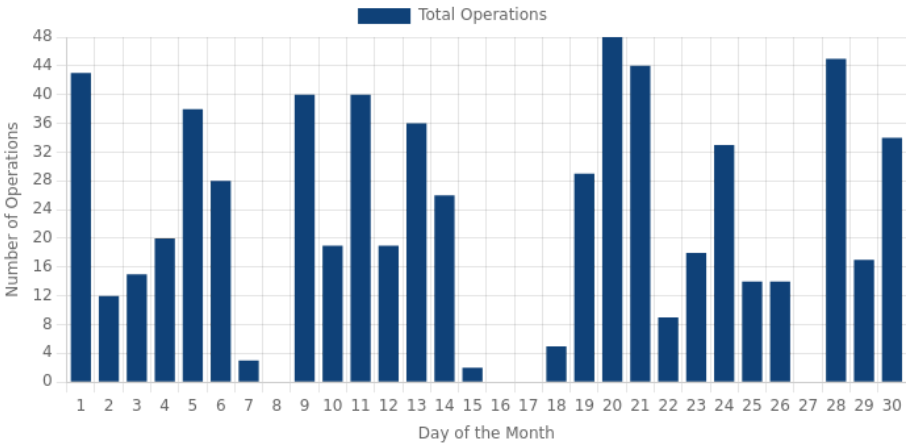
Time of Day



Day of the Week



Daily Operations



Operations by AAC/ADG						
	I	II	III	IV	V	VI
A	775	0	0	0	0	0
B	0	0	0	0	0	0
C	0	0	0	0	0	0
D	0	0	0	0	0	0
E	0	0	0	0	0	0

AAC/ADG Distribution

